



## Walk with Confidence: RHEO KNEE & RHEO KNEE XC Enhanced Stability Controls (ESC)

Dear {{Recipient.FirstName}},

Patient safety remains a key consideration for MPK users. Did you know that the RHEO KNEE and RHEO KNEE XC now feature Enhanced Stability Control (ESC) settings?

Enhanced Stability Controls (ESC) are two optional program settings that may be used to enhance knee stability. They may be used independently or together to complement the individual user's security and mobility needs.

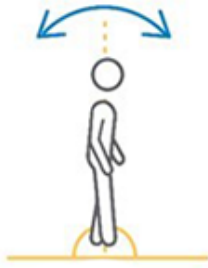
For the provision of extreme stability or to facilitate a 'step to' gait pattern for individuals in the early stages of rehabilitation, the manual lock on the RHEO KNEE securely locks the knee in full extension.

### ESC 'Swing Initiation' Setting

Mimics default stance control

When the prosthesis is lifted off the ground with less than 5-degrees of flexion, the RHEO KNEE will remain in stance, mimicking default stance behaviour. Users can

take small steps and move in confined spaces, with the confidence that the knee will remain in stance, stay extended and provide full support for the inexperienced or insecure user.



Swing flexion outside of the typical ambulation pattern is prevented. Swing phase will only be initiated after detecting a full heel to toe roll over.



## ESC 'Loading Response' Setting

Rapid delivery of high resistance with minimal load

Selecting loading response to 'stable' will provide increased support to the user in early stance.

At initial contact, stance resistance will instantly ramp up to 50% of the RHEO KNEE's maximum resistance. The Loading Response setting is not dependent on proportional load. Thus, the setting increases support with minimum loading of the prosthesis and eliminates unwanted stance flexion.



**ESC Controls for RHEO KNEE &  
RHEO KNEE XC**  
Microlearning Video

[Watch Now >](#)



**User Experiences with  
RHEO KNEE & RHEO KNEE XC**  
Testimonial Stories

[Read Stories >](#)

## Key Contacts



**Scott Elliott**  
Sales Director  
Prosthetics ANZ  
Mobile: 0400 882 327  
email: selliott@ossur.com



**Priscilla Kehoe**  
Customer Care Manager  
& Office Manager  
Mobile: 0403 895 402  
email: pkehoe@ossur.com



**Sarah Mulroy**  
Senior Clinical Specialist  
& Sales AM (VIC, TAS)  
Mobile: 0438 475 004  
email: smulroy@ossur.com



**Joany Badenhorst**  
Customer Care Rep.  
(Support VIC, TAS)  
Phone: 1300 123 268  
email: jbadenhorst@ossur.com



**Rob Hodgson**  
Clinical Specialist  
& Sales AM (NSW, ACT, SA)  
Mobile: 0417 783 980  
email: rhodgson@ossur.com



**Alex Mulreaney**  
Customer Care Rep.  
(Support NSW, ACT, SA)  
Phone: 1300 123 268  
email: Amulreaney@ossur.com



**Lizzie Carey**  
Clinical Specialist  
& Sales AM (NZ)  
Mobile: 0437 728 579  
email: lcarey@ossur.com



**Sofia Evangelista**  
Customer Care Rep.  
(Support NZ)  
Phone: 1300 123 268  
email: sevangelista@ossur.com



**Laura Roberts**  
Clinical Specialist  
& Sales AM (QLD, WA, NT)  
Mobile: 0447 938 632  
email: lroberts@ossur.com



**Carla Valencia**  
Customer Care Team Lead  
(Support QLD, WA, NT)  
Phone: 1300 123 268  
email: cvalencia@ossur.com



**Emma Mathews**  
Office Assistant  
Phone: 1300 123 268  
email: emathews@ossur.com



### Össur Australia - Prosthetics

26 Ross Street, North Parramatta, NSW 2151

1300 123 268 | [www.ossur.com.au](http://www.ossur.com.au)

© 2022 Össur

Want to change the types of emails you receive from Össur?

[Update your preferences](#)

