

# UNLOADER ONE® X

Unloader One X improves mobility by providing pain relief from knee osteoarthritis, degenerative meniscal tears, and other unicompartmental knee conditions that may benefit from unloading.

It features Össur's unique, proprietary, and clinically proven 3-point Leverage System that generates unicompartmental unloading of the knee joint.

Available in custom and OTS versions to help you fit your patient's different leg anatomies.



KNEE SOLUTIONS

## INDICATIONS FOR USE

For knee conditions that may benefit from unicompartmental load reduction, such as:

- Mild to severe unicompartmental knee osteoarthritis
- Degenerative meniscal tears
- Articular cartilage defect repair
- Meniscal repair
- Avascular necrosis
- Condylar bone marrow lesions (bone bruises)
- Tibial plateau fractures

## FEATURES AND BENEFITS

- Relieves Pain - 3 Point Leverage System with Dynamic Force System® straps, rigid shells, and a single upright hinge biomechanically unloads the affected knee compartment
- Control - Tool-free SmartDosing® dials enable the patient to fine-tune the strap tension to control pain
- Tool-Free - Tool-free polycentric hinge with optional ROM stops for range-of-motion restriction
- Comfortable - Skin-friendly liners feel great against the skin and reduce pressure points. Anti-migration strap technology design captures the widest part of the calf to reduce brace migration
- Easy-to-Use - Alignment guide on hinge facilitates correct positioning of the brace on the leg and color coded touch points aid in easy donning and doffing
- Easy-to-Wear - Slender frame with soft edges easily contours to individual anatomies and remains discreet whether worn under or over clothing
- Easy Care - Entire brace is machine washable (washbag included)

## REQUIRED MEASUREMENTS: UNLOADER ONE X CUSTOM

- Custom made to measure: Smartmeasure, 3D Scan (.AOP, .STL, .OBJ, .CPV) or Patient Cast

## SMARTMEASURE®

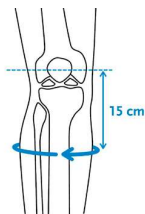
A digital measuring system for custom knee braces on the iPhone or iPad. The most intuitive, efficient and accurate way to measure for any Össur custom knee brace. Utilises a section-based, step-by-step approach to guide you through the entire brace selection, measuring and order process.



Description	Part#
SmartMeasure Measuring Kit	CMS0000
Constant Force Caliper	B-31200000

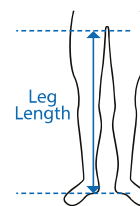
# UNLOADER ONE® X

## REQUIRED MEASUREMENTS: UNLOADER ONE X OTS



Measure calf circumference 15 cm below mid-patella. Leg in extension.

Measure leg length from floor to groin.



Size	Calf circumference 15 cm below mid patella
	cm
XS - M	25 - 43
L - XL	43 - 62

Model	Leg Length
Standard	> 85 cm
Short	≤ 85 cm

## COLOURS

### CUSTOM STANDARD COLOURS



Black Brace / Black Components



Blue Brace / Black Components



Charcoal Grey Brace / Black Components



Red Brace / Black Components



White Brace / Black Components



Yellow Brace / Black Components

### OTS COLOUR



Black Brace / Black Components

Actual colours may vary.

## ORDERING INFORMATION

Hinge is placed on the side of the affected compartment.  
Short version recommended for patients with a leg length of ≤ 85 cm (33.5").

### CUSTOM

Description	Part#
Right	UOX0R
Left	UOX0L

### OTS

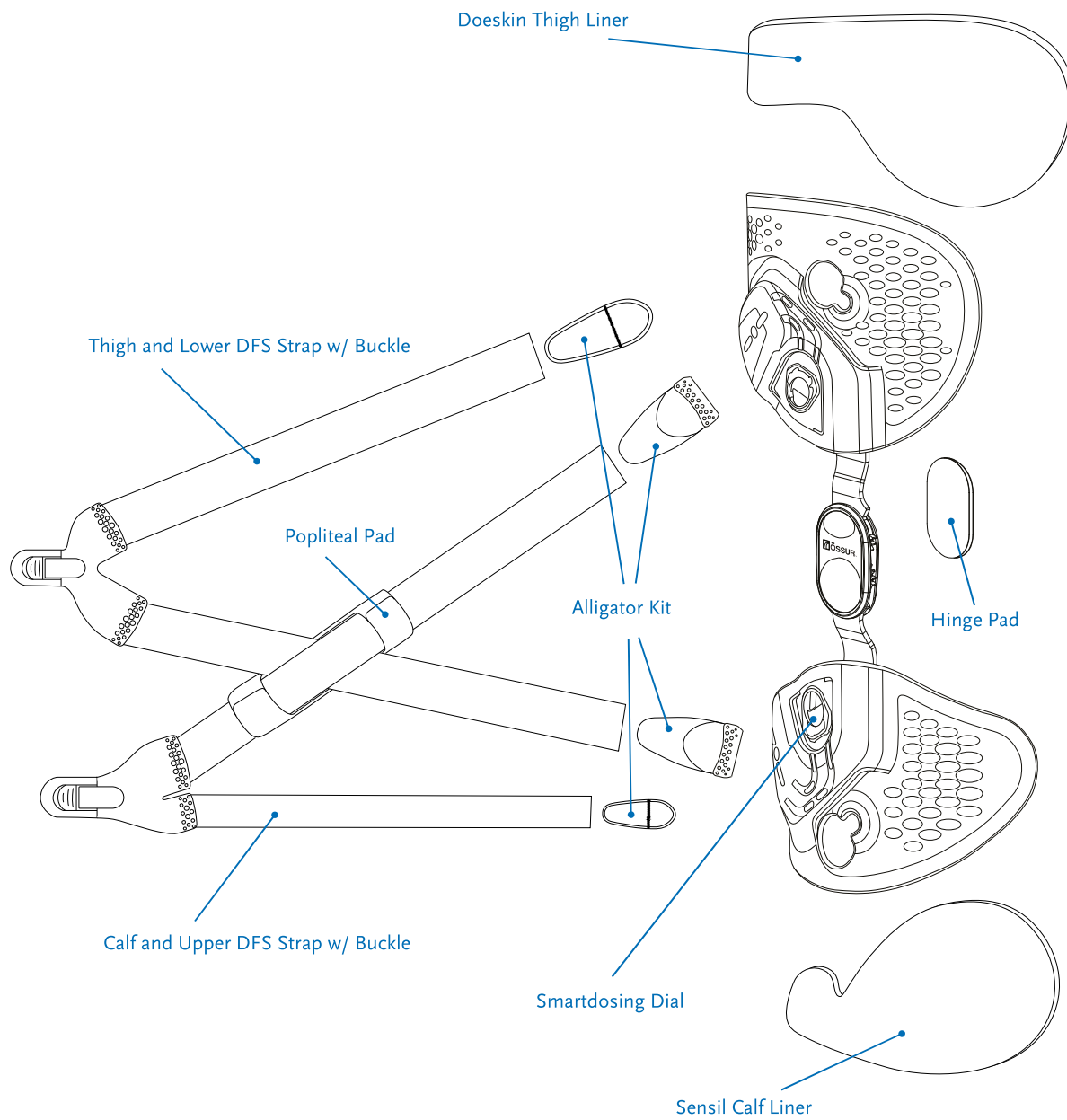
Standard	Right Medial	Right Lateral	Left Medial	Left Lateral
XS - M	UOX0518713	UOX0528713	UOX0618713	UOX0628713
L - XL	UOX0518715	UOX0528715	UOX0618715	UOX0628715

Short	Right Medial	Right Lateral	Left Medial	Left Lateral
XS - M	UOX1518713	UOX1528713	UOX1618713	UOX1628713
L - XL	UOX1518715	UOX1528715	UOX1618715	UOX1628715

# UNLOADER ONE® X

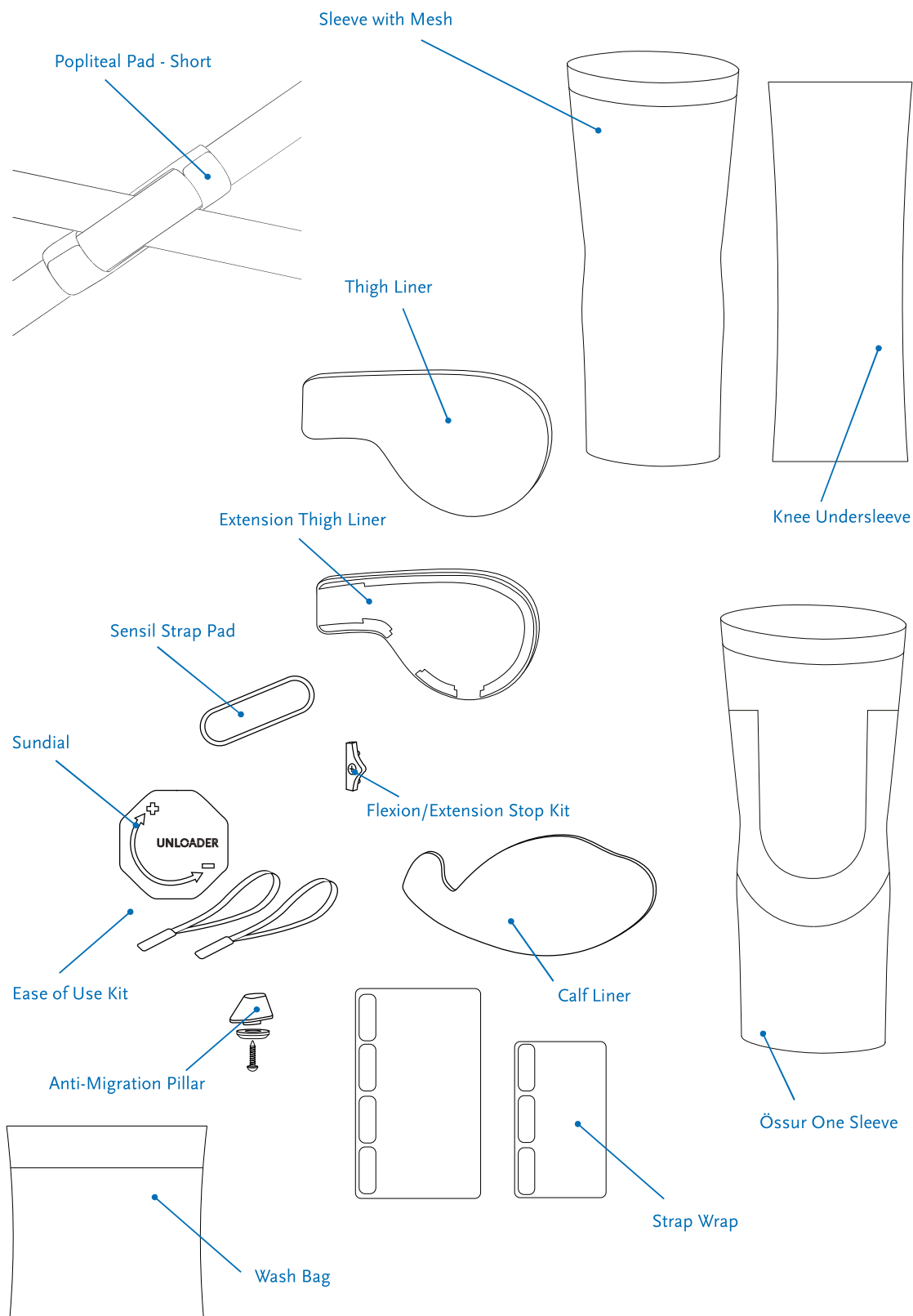
## REPLACEMENT PARTS

KNEE SOLUTIONS



# UNLOADER ONE® X

## ACCESSORIES



# UNLOADER ONE® X

KNEE SOLUTIONS

THIGH LINERS	THIGH, Right Medial, Left Lateral	THIGH, Right Lateral, Left Medial	THIGH EXTENSION, Right Medial, Left Lateral	THIGH EXTENSION, Right Lateral, Left Medial
Black, Sensil	UOX526801	UOX525801	NA	NA
Black, Doeskin	UOX526901	UOX525901	UOX546901	UOX545901

CALF LINERS	Right Medial, Left Lateral	Right Lateral, Left Medial
Black, Sensil XS-M	UOX516952	UOX515952
Black, Sensil L-XL	UOX516962	UOX515962
Black, Doeskin XS-M	UOX516951	UOX515951
Black, Doeskin L-XL	UOX516961	UOX515961

THIGH AND LOWER DFS STRAP*	Right Medial, Left Lateral	Right Lateral, Left Medial
Black	UOX406902	UOX405902

\*Includes Thigh and DFS Strap with buckle

CALF AND UPPER DFS STRAP*	Right Medial, Left Lateral	Right Lateral, Left Medial
Black	UOX406901	UOX405901

\*Includes Calf and DFS Strap with buckle

UOX SERVICE KIT*	Right Medial, Left Lateral	Right Lateral, Left Medial
Black, XS-M	UOX416901	UOX415901
Black, L-XL	UOX416911	UOX415911

\* Includes Doeskin Thigh Liner, Sensil Calf Liner, Thigh and Lower DFS Strap with Buckle, Calf and Upper DFS Strap with Buckle, Hinge Pad, Popliteal Pad, and Alligator Kit

ANTI-MIGRATION PILLAR	Right Medial, Left Lateral	Right Lateral, Left Medial
Black	UOX700015	UOX700035

# UNLOADER ONE® X

OTHER REPLACEMENT PARTS AND ACCESSORIES	Part#
Alligator Kit*	UOX900001
Hinge Pad	UOX700091
Popliteal Pad	UOX700012
Popliteal Pad - Short	UOX700022
Sensil Strap Pad	UON0181
Sensil Strap Pad - 10 Pieces	UOX700113
Smartdosing Dial	UOX1000001
Strap Wrap Set	UOX700014
Ease of Use Kit**	UOX800001
OA Hinge Extension Stop Tree (5°, 10°, 15°, 30°)	OA40029
OA Hinge Flexion Stop Tree (0°, 30°, 60°, 90°)	OA40039
Sundial	UOX1200001
Wash Bag	UON60200

\* Includes 4 Alligator Clips: 2 DFS, 1 Thigh and 1 Calf

\*\* Includes Sundial and 2 buckle finger-loops

SLEEVES	Black - Össur One*	Black - Sleeve with Mesh**	Black - Össur Knee Undersleeve***
XXS	OSO60021	NA	NA
XS	OSO60022	SLV60011	B-250150101
S	OSO60023	SLV60012	B-250150102
M	OSO60024	SLV60013	B-250150103
L	OSO60025	SLV60014	B-250150104
XL	OSO60026	SLV60015	B-250150105
XXL	OSO60027	SLV60016	B-250150106
3XL	OSO60028	NA	NA

\* Össur One: 51% Tencel™/30% Polyamide/19% Elastane

\*\*Sleeve with Mesh: Main fabric: 92% Cotton/8% Spandex - Mesh: 100% Polyester - Band: 80% Polyester/20% Spandex

\*\*\*Össur Knee Undersleeve: 80% Nylon/20% Spandex