

BRACING & SUPPORT SOLUTIONS CATALOG



BRACING & SUPPORT SOLUTIONS CATALOG

TABLE OF CONTENTS

ÖSSUR OA SOLUTIONS.....	3
INTRODUCTION TO OA SOLUTIONS	4
UNLOADER ONE [®] X	6
 ÖSSUR INJURY SOLUTIONS	12
INTRODUCTION TO INJURY SOLUTIONS.....	13
MIAMI J [®] SELECT.	14
MIAMI J [®]	15
MIAMI JTO [®] THORACIC EXTENSION.....	17
MIAMI Jr [®]	18
PHILADELPHIA [®] TRACHEOTOMY COLLAR.....	19
FORMFIT [®] BACK SUPPORT, AIR	20
FORMFIT [®] BACK SUPPORT	21
 UPPER EXTREMITY	22
FORMFIT [®] SHOULDER BRACE	23
REBOUND [®] POST-OP ELBOW	24
SHOULDER ABDUCTION SLING.....	26
PREMIUM SHOULDER IMMOBILIZER	26
EXOFORM [®] WRIST	27
EXOFORM [®] CARPAL TUNNEL WRIST.....	27
FORMFIT [®] WRIST / FORMFIT [®] WRIST & FOREARM..	28
FORMFIT [®] THUMB SPICA	29

KNEE.....	30
CTI [®] CUSTOM.....	31
CTI [®] 3.....	34
REBOUND [®] POST OP KNEE.....	37
FORMFIT [®] POST-OP KNEE	38
REBOUND [®] KNEE IMMOBILIZER UNIVERSAL	39
 FOOT AND ANKLE.....	40
REBOUND [®] AIR WALKER	41
ROM WALKER.....	43
FORMFIT [®] ANKLE BRACE	44
AFO DYNAMIC	45
AFO LIGHT.....	47
FOOT-UP [®]	48
FORMFIT [®] ANKLE STIRRUPS	49

ÖSSUR OA SOLUTIONS

Enhance quality of life and mobility for people living with osteoarthritis.

These product solutions have been built on decades of experience and are designed to enhance the quality of life of people living with osteoarthritis by reducing pain and improving mobility. Through innovation leadership, OA expertise and partnerships with medical professionals, we offer comprehensive, proven and effective treatment options.

UNLOADER®

The Össur Unloader® brand name has become synonymous with Osteoarthritis bracing, representing OA Solutions' technology as the industry standard, with more than 15 clinical studies demonstrating its efficacy.

Össur strives to maintain its position as the innovation leader for OA Solutions by continuing to develop simple, yet effective clinically proven treatment solutions that increase people's quality of life.





KNEE OA



UNLOADER ONE® X

UNLOADER ONE® X

Unloader One X improves mobility by providing pain relief from knee osteoarthritis, degenerative meniscal tears, and other unicompartmental knee conditions that may benefit from unloading.

It features Össur's unique, patented, and clinically proven 3-point Leverage System that generates unicompartmental unloading of the knee joint.

INDICATIONS FOR USE

- Moderate to severe unicompartmental knee osteoarthritis
- Degenerative meniscal tears
- Other knee conditions such as:
 - Articular cartilage defect repair
 - Meniscal repair
 - Avascular necrosis
 - Condylar bone marrow lesions
 - Tibial plateau fractures

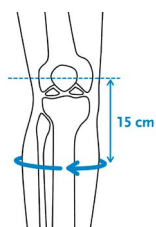
FEATURES AND BENEFITS

- Relieves Pain - 3 Point Leverage System with Dynamic Force System® straps, rigid shells, and a single upright hinge biomechanically unloads the affected knee compartment.
- Control - Tool-free SmartDosing® dials enable the patient to fine-tune the strap tension to control pain.
- Comfortable - Skin-friendly liners feel great against the skin and reduce pressure points. Anti-migration strap technology design captures the widest part of the calf to reduce brace migration.
- Easy-to-Use - Alignment guide on hinge facilitates correct positioning of the brace on the leg and color coded touch points aid in easy donning and doffing.
- Easy-to-Wear - Slender frame with soft edges easily contours to individual anatomies and remains discreet whether worn under or over clothing.
- Easy Care - Entire brace is machine washable (washbag included).



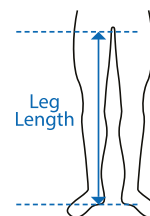
UNLOADER ONE® X

REQUIRED MEASUREMENTS: UNLOADER ONE X OTS



Measure calf circumference 15 cm (6") below mid-patella. Leg in extension.

Measure leg length from floor to groin.



Size	Calf circumference 15 cm (6") below mid patella	
	cm	inch
XS - M	25 - 43	9¾ - 16¾
L - XL	43 - 62	16¾ - 24⅞

Model	Leg Length
Standard	> 85 cm (33.5")
Short	≤ 85 cm (33.5")

COLORS

OTS COLOR



Charcoal Grey Brace /
Grey Components

Actual colors may vary.

ORDERING INFORMATION

Hinge is placed on the side of the affected compartment.

Short version recommended for patients with a leg length of ≤ 85 cm (33.5").

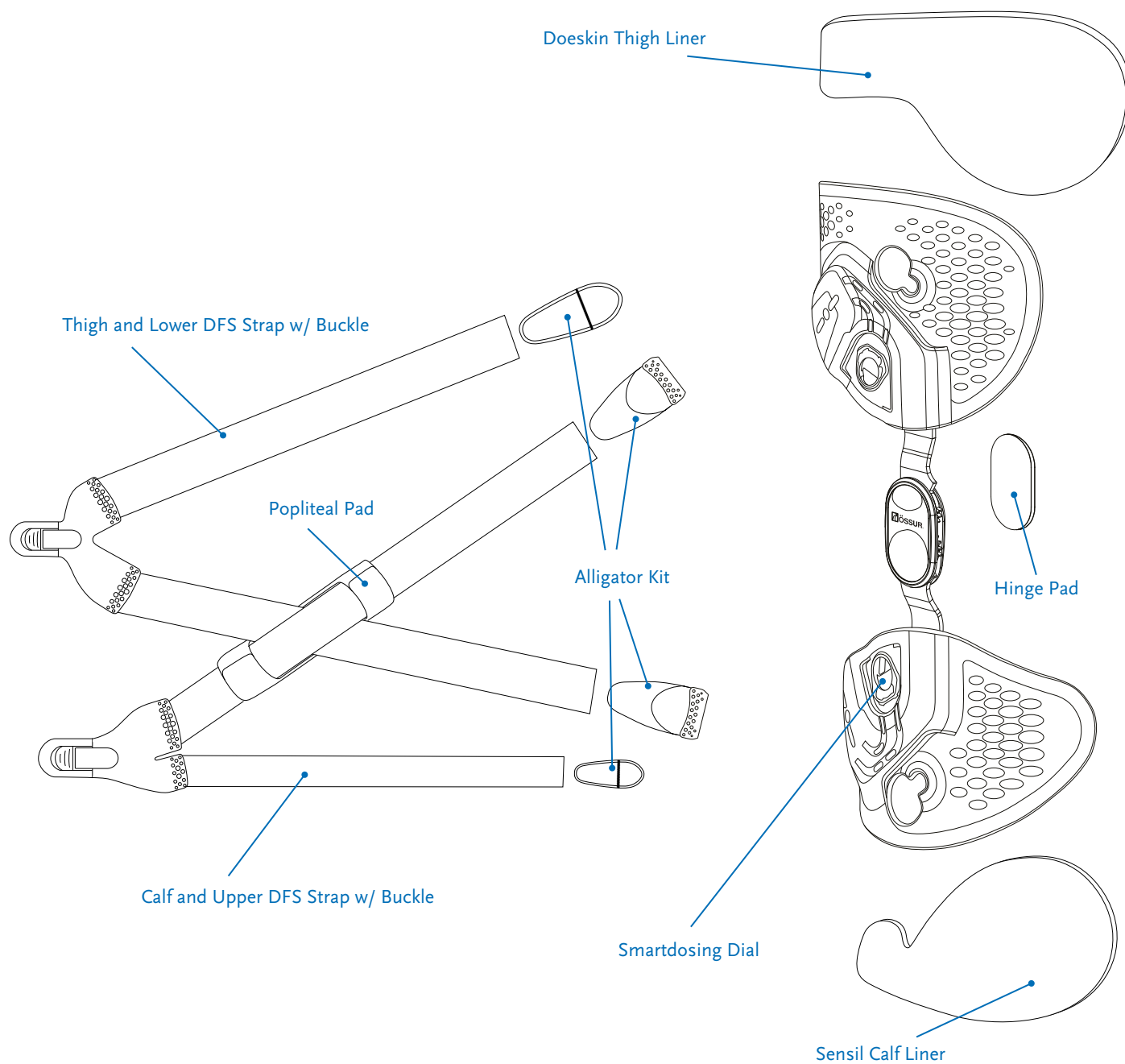
OTS

Standard	Right Medial	Right Lateral	Left Medial	Left Lateral
XS - M	UOX0518713	UOX0528713	UOX0618713	UOX0628713
L - XL	UOX0518715	UOX0528715	UOX0618715	UOX0628715

Short	Right Medial	Right Lateral	Left Medial	Left Lateral
XS - M	UOX1518713	UOX1528713	UOX1618713	UOX1628713
L - XL	UOX1518715	UOX1528715	UOX1618715	UOX1628715

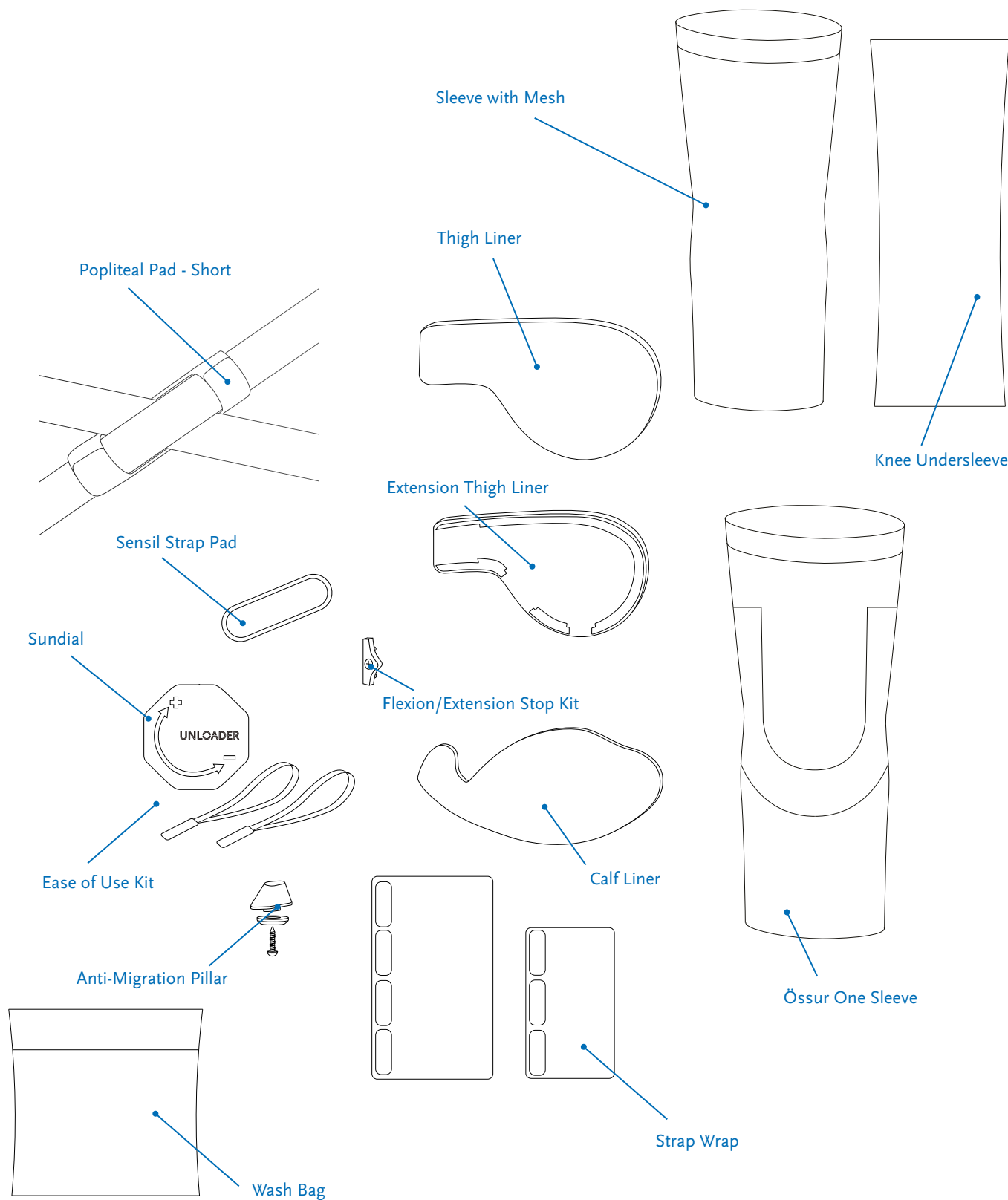
UNLOADER ONE® X

REPLACEMENT PARTS



UNLOADER ONE® X

ACCESSORIES



UNLOADER ONE® X

THIGH LINERS	THIGH, Right Medial, Left Lateral	THIGH, Right Lateral, Left Medial	THIGH EXTENSION, Right Medial, Left Lateral	THIGH EXTENSION, Right Lateral, Left Medial
Black, Sensil	UOX526801	UOX525801	NA	NA
Black, Doeskin	UOX526901	UOX525901	UOX546901	UOX545901
Grey, Sensil	UOX526201	UOX525201	NA	NA
Grey, Doeskin	UOX526101	UOX525101	UOX546101	UOX545101

CALF LINERS	Right Medial, Left Lateral	Right Lateral, Left Medial
Black, Sensil XS-M	UOX516952	UOX515952
Black, Sensil L-XL	UOX516962	UOX515962
Black, Doeskin XS-M	UOX516951	UOX515951
Black, Doeskin L-XL	UOX516961	UOX515961
Grey, Sensil XS-M	UOX516152	UOX515152
Grey, Sensil L-XL	UOX516162	UOX515162
Grey, Doeskin XS-M	UOX516151	UOX515151
Grey, Doeskin L-XL	UOX516161	UOX515161

THIGH AND LOWER DFS STRAP*	Right Medial, Left Lateral	Right Lateral, Left Medial
Black	UOX406902	UOX405902
Grey	UOX406102	UOX405102

*Includes Thigh and DFS Strap with buckle

CALF AND UPPER DFS STRAP*	Right Medial, Left Lateral	Right Lateral, Left Medial
Black	UOX406901	UOX405901
Grey	UOX406101	UOX405101

*Includes Calf and DFS Strap with buckle

UOX SERVICE KIT*	Right Medial, Left Lateral	Right Lateral, Left Medial
Black, XS-M	UOX416901	UOX415901
Black, L-XL	UOX416911	UOX415911
Grey, XS-M	UOX416101	UOX415101
Grey, L-XL	UOX416111	UOX415111

* Includes Doeskin Thigh Liner, Sensil Calf Liner, Thigh and Lower DFS Strap with Buckle, Calf and Upper DFS Strap with Buckle, Hinge Pad, Popliteal Pad, and Alligator Kit

ANTI-MIGRATION PILLAR	Right Medial, Left Lateral	Right Lateral, Left Medial
Black	UOX700015	UOX700035
Grey	UOX700025	UOX700045

UNLOADER ONE® X

OTHER REPLACEMENT PARTS AND ACCESSORIES	Black	Grey
Alligator Kit*	UOX900001	UOX900002
Hinge Pad	UOX700091	UOX700011
Popliteal Pad	UOX700012	UOX700092
Popliteal Pad - Short	UOX700022	UOX700082
Sensil Strap Pad	UON0181	UON0182
Sensil Strap Pad - 10 Pieces	UOX700113	UOX700193
Smartdosing Dial	UOX1000001	UOX1000002
Strap Wrap Set	UOX700014	UOX700094

* Includes 4 Alligator Clips: 2 DFS, 1 Thigh and 1 Calf

OTHER REPLACEMENT PARTS AND ACCESSORIES	Part #
Ease of Use Kit*	UOX800001
Flexion/Extension Stop Kit**	B-301040053
Flexion/Extension Stop Kit** - 5 Sets	B-301040055
Sundial	UOX1200001
Wash Bag	UON60200

* Includes Sundial and 4 buckle finger-loops

** Includes 0°, 5°, 10°, 15°, 30° Extension Stops, 90° Flexion Stop

SLEEVES	Calf	Thigh	Grey - Össur One*	Black - Össur One*	Black - Sleeve with Mesh**	Black - Össur Knee Undersleeve***
XS	29-33 cm	36-42 cm	OSO60012	OSO60022	SLV60011	B-250150101
S	33-37 cm	42-48 cm	OSO60013	OSO60023	SLV60012	B-250150102
M	37-42 cm	48-55 cm	OSO60014	OSO60024	SLV60013	B-250150103
L	42-47 cm	55-62 cm	OSO60015	OSO60025	SLV60014	B-250150104
XL	47-52 cm	62-70 cm	OSO60016	OSO60026	SLV60015	B-250150105
XXL	52-57 cm	70-78 cm	OSO60017	OSO60027	SLV60016	B-250150106

* Össur One: 51% Tencel™/30% Polyamide/19% Elastane

**Sleeve with Mesh: Main fabric: 92% Cotton/8% Spandex - Mesh: 100% Polyester - Band: 80% Polyester/20% Spandex

***Össur Knee Undersleeve: 80% Nylon/20% Spandex

ÖSSUR INJURY SOLUTIONS

For people recovering from fractures, ligament injuries or in need of post-operative treatment solutions.

These product solutions have been built on decades of experience and are designed to enhance the healing process of bone and soft tissue injuries. Through innovation leadership, proven biomechanical approaches, and partnerships with leading medical professionals, we strive to offer comprehensive and effective treatment options.

Össur Injury Solutions are globally recognized, primarily under the brand names CTi®, Rebound® and Miami®, all of which are developed to assist healing and increase people's quality of life.

Our expertise in Injury Solutions has driven us to take the next step forward by developing indication-specific products which are designed to optimize healing while maintaining function and mobility. These Functional Healing products incorporate Össur proprietary technology and are designed to enhance clinically relevant outcomes.



FUNCTIONAL HEALING –
WHERE MOBILITY MEANS RECOVERY.



SPINE



MIAMI J®

KNEES



CTi®

FEET



REBOUND® AIR WALKER

MIAMI J® SELECT

The Miami J Select cervical collar by Össur offers the widest range of height adjustability in the market with a single, universal design that replicates the comfort, immobilization and quality you expect from a Miami J product. Featuring a patented, first-to-market locking mechanism to encourage patient compliance and anti-microbial Sorbatex padding, Miami J Select is designed to support successful patient outcomes.



INDICATIONS FOR USE

Situations requiring gross immobilization of the cervical spine, these may include:

- Pre- and post c-spine surgery
- C-spine precaution for trauma patients

FEATURES AND BENEFITS

- Easy height adjustability with a tamper-proof locking mechanism – ‘Left to Lock’.
- Anti-microbial & biocompatible Sorbatex™ padding prevents bacterial build-up.
- Universal design that doesn’t compromise immobilization or comfort.
- 7 precise fitting sizes with opportunity to fine-tune.
- Miami J® inspired chin tray.
- One-piece, anatomically inspired collar back with Flex Edge® designed to reduce occipital pressure.
- Easy to don and doff with patented Reproducible Fit option.
- Intuitive blue Patient Touch-Points to send patients home with confidence – Blue is You™.
- Simplified comfort adjustments with integrated and patented Sternal-Relief Dial.
- Large tracheal opening – improved function for ICU patients.
- Easy to clean and replace multi-colored padding.
- X-ray and CT lucent, MR-safe.
- Compatible with Occian™ Back & Miami JTO® accessories.

ORDERING INFORMATION

Description	Part#	Part#
Miami J Select Collar Set	One-size adjustable (Universal)	MJSR-101
Miami J Select Collar	One-size adjustable (Universal)	MJS-101
Miami J Select Replacement Pads	One-size adjustable (Universal)	MJSP-101
Miami J Select Reproducible Fit Tabs (10 pack)	One-size adjustable (Universal)	MJST-101

MIAMI J®

Known as the superior c-spine immobilizer through multiple independent studies, the Miami J's patented design meets the specialized needs of all those afflicted with cervical injuries. The Miami J offers features that enhance compliance while providing immobilization, inhibition of skin breakdown and patient comfort.



INDICATIONS FOR USE

- Post-trauma
- Stable cervical fractures
- Cervical spondylitis
- Cervical spondylosis
- RA and OA cervical spine
- Herniated cervical disc
- Post-operative
- Motor Neurone Disease

FEATURES AND BENEFITS

- Sorbatex™ padding is antibacterial and clinically proven to inhibit microbial growth, which enhances comfort and helps assure patient compliance
- Bioengineered to minimize pressure points in key known areas: Chin, occiput, trapezius and clavicle
- Angulation buttons for occiput and sternal pad is removable when supine, lying and swallowing
- MRI, CT and X-ray lucent, MR safe

REQUIRED MEASUREMENTS

- Sizing based on 6 phenotypes to ensure correct fit and optimum immobilization

Phenotype-driven sizing system makes size selection simple while drastically reducing margin of error in fitting a patient. Each collar has a bioengineered front with a specific back designed to work together for superior immobilization. For pediatric sizing, please see Miami Jr in this Catalog.

Specialty Sizes (40% of population)

Standard Sizes (60%)

Kyphotic (10%)	XSmall (5%)	Stout (15%)	Tall (10%)	Regular (30%)	Short (30%)
<ul style="list-style-type: none"> • kyphotic • chin-on-chest • geriatric • osteoporitic and/or ankylosing spondylitic 	<ul style="list-style-type: none"> • Very short, thin neck • Principally female • More prevalent in the Asian population 	<ul style="list-style-type: none"> • Very large neck circumference • Obese • "No neck" • Massive shoulders 	<ul style="list-style-type: none"> • Long, tall neck • "Swan neck" • Young Women • Adolescents 	<ul style="list-style-type: none"> • Female • Standard size for mature women • Thin, mature male 	<ul style="list-style-type: none"> • Standard size for mature men • Short-necked women

*For individuals with neck circumference > 25", the Bariatric collar is recommended.

MIAMI J®

ORDERING INFORMATION

MIAMI J

Size	Collar set*	Collar	Collar Back	Collar Front
Super Short	MJR-200S	MJ-200S	MJ-400BK	MJ-200SFRT
Stout	MJR-200L	MJ-200L	MJ-200LBK	MJ-200LFRT
XS	MJR-250	MJ-250	MJ-250BK	MJ-250FRT
Short	MJR-300	MJ-300	MJ-300BK	MJ-300FRT
Regular	MJR-400	MJ-400	MJ-400BK	MJ-400FRT
Tall	MJR-500	MJ-500	MJ-500BK	MJ-500FRT
Bariatric	MJR-200B	MJ-200B		

*Collar sets come with one additional set of replacement pads.

Miami J Front and Back Panels may be interchanged to accommodate patient anatomy, e.g. a Short Front may be used with a Tall Back.

Choose collar size based on patient neck height, not patient body size. Super Short collars are packaged with Regular Back Panels

ACCESSORIES

REPLACEMENT PADS

Size	Part#
Super Short	MJP-100
Stout	MJP-200L
XS	MJP-250
Short	MJP-100
Regular	MJP-100
Tall	MJP-100
Bariatric	MJP-200B

MIAMI JTO® THORACIC EXTENSION

The Miami JTO Thoracic Extension is designed in conjunction with leading spine surgeons, orthotists and nurses. The orthosis is used exclusively with all Miami J® collars when even greater stability at the cervical junctions is indicated.



INDICATIONS FOR USE

- | | |
|--|--|
| <p>Lower C-Spine disruptions</p> <ul style="list-style-type: none"> • Level one instabilities • Isolated compartment fracture • Lateral mass fracture • Spinous Process fracture | <p>Upper C-Spine disruptions</p> <ul style="list-style-type: none"> • For increased stability over the collar alone • Stable Jefferson or Hangman's Fracture • Type I Odontoid Fracture |
|--|--|

FEATURES AND BENEFITS

- Provides more control than a collar alone can provide
- Innovative device designed to treat cervical and high-thoracic injuries
- Patented design with 'floating back' permits maximum immobilization without the risk of compensatory motion
- Snap on and off without tools
- Sorbatex™ II padding is antibacterial and clinically proven to inhibit microbial growth, which enhances comfort and helps assure patient compliance
- MRI, CT and X-ray lucent, MR compatible

REQUIRED MEASUREMENTS

- Universal, one size

ORDERING INFORMATION

MIAMI JTO THORACIC EXTENSION

Description	Part#
Miami JTO	MT-900
Miami JTO with replacement softgoods	MTR-900

Compatible with all sizes of the Miami J®, level 1 through 5 of the Miami J® Select, and the P3 Miami Jr®. Any model of Miami J collar is not included with Miami JTO Thoracic Extension and is purchased separately.

ACCESSORIES

Description	Part#
Replacement softgoods	MTP-950

MIAMI Jr®

The Miami Jr is the breakthrough collar designed exclusively for children of 12 years and under. The Miami Jr line, which spans the growth cycle, is sized according to age. Össur is the only company that has a pediatric line of collars based on the anatomical differences between adults and children. We realize that children are not just “little adults” – they require innovative design.



INDICATIONS FOR USE

- Post-trauma
- Stable cervical fractures
- Cervical spondylitis
- Cervical spondylosis
- RA and OA cervical spine
- Herniated cervical disc
- Post-operative
- Motor Neurone Disease

FEATURES AND BENEFITS

- Innovative collar designed exclusively for children 12 years and under anatomy pediatric
- Sorbatex™ II pads make the collar “skin friendly” and protect skin integrity during extended wear
- MRI, CT and X-ray lucent, MR safe

REQUIRED MEASUREMENTS

- Age

ORDERING INFORMATION

MIAMI JR

Size	Collar set*	Collar
0 – 6 months	MJR-P0	MJ-P0
6 – 24 months	MJR-P1	MJ-P1
2 – 6 years	MJR-P2	MJ-P2
6 – 12 years	MJR-P3	MJ-P3

*Collar sets come with one additional set of replacement pads.

ACCESSORIES

REPLACEMENT PADS

Size	Part#
0 – 6 months	MJP-P0
6 – 24 months	MJP-P1
2 – 6 years	MJP-P2
6 – 12 years	MJP-P3

PHILADELPHIA® TRACHEOTOMY COLLAR

INDICATIONS FOR USE

- Post-trauma
- Herniated cervical disc
- Cervical spondylitis
- Post-operative
- Cervical spondylosis
- Motor Neurone Disease
- RA and OA cervical spine



FEATURES AND BENEFITS

- Not made with natural rubber latex, non-toxic and hypoallergenic Plastazote® foam reduces skin irritation
- Total cervical arch support maintains neutral alignment of the cervical spine
- Water-resistant for bathing and hydro-therapy.

REQUIRED MEASUREMENTS

- Neck circumference and height from tip of chin to sternal notch

ORDERING INFORMATION

Size	Neck circumference	6 cm / 2.25" height	8 cm / 3.25" height	11 cm / 4.25" height	13 cm / 5.25" height
X-Small	up to 10" (< 25 cm)	PHP-T2XS			
Small	10 – 13" (25 – 33 cm)	PHP-T2S	PHP-T3S	PHP-T4S	PHP-T5S
Medium	13-16" (33 – 41 cm)	PHP-T2M	PHP-T3M	PHP-T4M	PHP-T5M
Large	16-19" (41 – 48 cm)	PHP-T2L	PHP-T3L	PHP-T4L	PHP-T5L
X-Large	19" up (48 cm)	PHP-T2XL	PHP-T3XL	PHP-T4XL	PHP-T5XL

Size	Neck circumference	Height	Part#
Infant	6-8" (15 – 20 cm)	1.25" (3 cm)	PHP-TI
Pediatric	8-11" (20 – 28 cm)	1.75" (4.5 cm)	PHP-TP

ACCESSORIES

PHILADELPHIA COOLMAX COTTON LINER

Size	Neck circumference	Part#
Infant	6-8" (15 – 20 cm)	PHP-LCI
X-Small	up to 10" (< 25 cm)	PHP-LCXS
Small	10-13" (25 – 33 cm)	PHP-LCS
Medium	13-16" (33 – 41 cm)	PHP-LCM
Large	16-19" (41 – 48 cm)	PHP-LCL
X-Large	19" up (> 48 cm)	PHP-LCX

PHILADELPHIA TRACHEOTOMY ATTACHMENTS

Size	Stabilizer
Adult	PHP-OS

FORMFIT® BACK SUPPORT, AIR

INDICATIONS FOR USE

- Muscular low back pain
- Lumbosacral strains
- Chronic low back pain
- Sciatica

FEATURES AND BENEFITS

- Intuitive integrated pneumatic system for more customized compression and support
- Anti-migration system reduces slippage
- Double wrap design for improved compression
- Finger loops for easy application
- Hot/Cold Gel Pad available separately



REQUIRED MEASUREMENTS

- Waist circumference

ORDERING INFORMATION

Size	Waist circumference	Standard
S	25-30" (63 – 76 cm)	209133
M	30-34" (76 – 86 cm)	209135
L	34-38" (86 – 97 cm)	209137
XL	38-42" (97 – 107 cm)	209138
XXL	42-56" (107 – 142 cm)	209139

ACCESSORIES

Description	Part#
Hot/Cold Therapy Gel Pad	GB19028
Back Support Suspenders Clip On	10912

FORMFIT® BACK SUPPORT

INDICATIONS FOR USE

- Lumbar strains
- General posture support
- Lumbosacral strains
- Sciatica

FEATURES AND BENEFITS

- Muscular low back pain
- Lumbosacral strains
- Chronic low back pain
- Sciatica



REQUIRED MEASUREMENTS

- Waist circumference

ORDERING INFORMATION

Size	Waist Circumference	Standard
Small	25 – 30" (63 – 76 cm)	209143
Medium	30 – 34" (76 – 86 cm)	209145
Large	34 – 38" (86 – 97 cm)	209147
X-Large	38 – 42" (97 – 107 cm)	209148
XX-Large	42 – 56" (107 – 142 cm)	209149
XXX-Large	56 – 60" (142 – 152 cm)	209151

ACCESSORIES

Description	Part#
Back Support Suspenders Clip On	10912
Hot/Cold Therapy Gel Pad	GB19028



UPPER EXTREMITY



FORMFIT® SHOULDER BRACE

The Formfit Shoulder Brace is designed to provide immobilization following shoulder injury/surgery. With its streamlined fit, sporty look and breathability it offers excellent comfort and ease of use. Same as its predecessor, the SmartSling®, the Formfit Shoulder Brace also provides abduction of the shoulder (when the abduction pillow is attached), or external rotation of the shoulder (when the external rotation pillow is attached).

Optional axilla pillow helps distribute weight over a larger surface area and decreases pressure on the ulnar nerve.

INDICATIONS FOR USE

- Immobilization for rotator cuff repairs
- Bankart Repairs
- Capsular Shift
- Gleno humeral dislocation/subluxations

FEATURES AND BENEFITS

- Breathable material
- Quick-release buckles
- Offloading strap
- Extra padding
- Universal thumb loop



Axilla Pillow



External rotation pillow



REQUIRED MEASUREMENTS

- Olecranon to end of closed fist

ORDERING INFORMATION

Size	Fits Length	Description	Part
Small	10.5-13" (up to 29 cm)	Formfit Shoulder Brace with Abduction	SSS
Medium	13.25-15.75" (29-40 cm)	Formfit Shoulder Brace with Abduction	SSR
Large	16-17.5" (40-44.5 cm)	Formfit Shoulder Brace with Abduction	SSL

ACCESSORIES

Description	Part
Axilla Pillow	SSAXP
External Rotation Pillow	SSE

REBOUND® POST-OP ELBOW

The Rebound® Post-Op Elbow brace by Össur combines intuitive features for fitters and users with a design that aims to improve the post-op experience. The industry's only elbow immobilizer that combines a drop-lock hinge and four telescoping paddles, individual post-op protocols are easily catered to. The Rebound Post-Op Elbow, lightest of its kind, promotes user comfort with straps that stay in place, anatomical left/right fit with moldable stability cuffs, and blue patient touch-points for easy education.

INDICATIONS FOR USE

Indications requiring elbow immobilization and/or range of motion restriction. This may include:

- Stable fractures of the elbow, distal humerus, proximal radius or ulna
- Tendon and ligament injuries or repairs
- Collateral ligament reconstructions
- Elbow hyperextension
- Triceps tendon repair
- Chronic elbow injuries
- Tennis elbow release



FEATURES AND BENEFITS

- Designed to be the most lightweight brace on the market.
- Telescoping paddles relocate to individualize length and keep incision sites clear.
- Easy education for users with intuitive patient touch-points, including Blue is You™ buckles and numbered strapping system.
- Drop-Lock hinge enables secure range of motion with bump-resistant pull adjustment stops and optional ROM lock-outs.
- Moldable stability cuffs designed to be individually customized for improved fit and support.
- Strap guides maintain strap location for added security and comfort.
- Universal fit for both left/right elbows.

REQUIRED MEASUREMENTS

- Universal, one size

REBOUND® POST-OP ELBOW

ORDERING INFORMATION

Side	Part#
Left	B-8391680
Right	B-8391580

ACCESSORIES

ACCESSORY KITS

Description	Part#
Elbow Liner Kit	B-8390002
Elbow Wrist Control Kit	B-8390003
Elbow Sling Kit	B-8390004
Elbow ROM Locks Kit	B-8390005
Strap Tab Kit	B-8390006
Adhesive Hook Sticker Kit	B-8390007
Anti-Migration Pad Kit	B-8390008
Elbow Strap Kit	B-8390009

SHOULDER ABDUCTION SLING

INDICATIONS FOR USE

- Shoulder injuries
- Post-operative

FEATURES AND BENEFITS

- Provides shoulder abduction at 10° with support
- Cushion rests on waist to support weight of arm
- Breathable cotton provides a comfortable fit
- Fits left and right



REQUIRED MEASUREMENTS

- Measure elbow crease to fingertip

ORDERING INFORMATION

Size	Elbow crease to fingertip	Part#
Small	up to 12.5" (< 32 cm)	204053
Medium	12.5-15.5" (32 – 39 cm)	204055
Large	15.5" and up (39 cm +)	204057

PREMIUM SHOULDER IMMOBILIZER

INDICATIONS FOR USE

- Post-trauma
- Post-operative

FEATURES AND BENEFITS

- Comfortable fit
- Easily adjusts
- One size fits all (max circumference 45")



ORDERING INFORMATION

Description	Part#
Premium Shoulder Immobilizer	0380
Premium Shoulder Immobilizer XL	0380XL

EXOFORM® WRIST

INDICATIONS FOR USE

- Mild to Moderate sprains and strains
- Tendonitis
- Post-cast healing
- Other select soft tissue injuries

FEATURES AND BENEFITS

- Ergonomically contoured padding
- Rigid plastic supports contour to the hand and wrist
- Adjustable aluminum palmar stay allows for fine-tuning when needed



REQUIRED MEASUREMENTS

- Wrist circumference

ORDERING INFORMATION

Size	Wrist Circumference	Left	Right
X-Small	5.25 – 6.25" (13 – 16 cm)	507082	507072
Small	6.25 – 7.25" (16 – 18.5 cm)	507083	507073
Medium	7.25 – 8" (18.5 – 20.5 cm)	507085	507075
Large	8 – 9" (20.5 – 23.5 cm)	507087	507077
X-Large	9 – 10" (23.5 – 25.5 cm)	507088	507078

EXOFORM® CARPAL TUNNEL WRIST

INDICATIONS FOR USE

- Carpal tunnel syndrome
- Tendonitis

FEATURES AND BENEFITS

- Allows for full MCP flexion
- Contoured for anatomical fit
- Provides radial and ulnar styloid relief
- Low profile
- Preshaped into a neutral position for comfortable limited motion/flexibility



REQUIRED MEASUREMENTS

- Wrist and palm circumference

ORDERING INFORMATION

Size	Wrist Circumference	Palm Circumference	Left	Right
Small	5.25 – 6.5" (13 – 16.5 cm)	6.75 – 8" (17 – 20.5 cm)	517083	517073
Medium	6.5 – 7.75" (16.5 – 19 cm)	8 – 9.25" (20.5 – 23.5 cm)	517085	517075
Large	7.75 – 10" (19 – 25.5 cm)	9.25 – 10.5" (23.5 – 26 cm)	517087	517077

FORMFIT® WRIST / FORMFIT® WRIST & FOREARM

Formfit Wrist, and Formfit Wrist & Forearm, provides immobilization and protection for patients suffering from tendonitis, select soft tissue injuries – including mild to moderate sprains and strains, as well as for post-cast healing. The lightweight, breathable material and contour fit make this comfortable product an excellent choice.



INDICATIONS FOR USE

- Mild to moderate sprains and strains
- Tendonitis
- Post-cast healing
- Other selected soft tissue injuries

FEATURES AND BENEFITS

- Breathable material
- Contour fit
- Contact Closure Straps
- Customizable Stays

REQUIRED MEASUREMENTS

- Wrist circumference

ORDERING INFORMATION

FORMFIT WRIST & FOREARM

		8"		10"	
Size	Wrist Circumference	Left	Right	Left	Right
XSmall	5.25 – 6.25" (13 – 16 cm)	317082	317072	617082	617072
Small	6.25 – 7.25" (16 – 18.5 cm)	317083	317073	617083	617073
Medium	7.25 – 8" (18.5 – 20.5 cm)	317085	317075	617085	617075
Large	8 – 9" (20.5 – 23.5 cm)	317087	317077	617087	617077
XLarge	9 – 10 (23.5 – 25.5 cm)	317088	317078	617088	617078

ACCESSORIES

GEL PAD FOR HOT/COLD THERAPY

Description	Left	Right
Formfit Wrist (8" version)*	GB20L	GB20R
Formfit Wrist & Forearm (10" version)	GB22L	GB22R



* Fits XSmall/Small. For Medium-XLarge, please use Form Forearm 10" part numbers

FORMFIT® THUMB SPICA

The Formfit® Thumb Spica is designed to restrict wrist and thumb motion. It provides immobilization and protection for patients suffering from tendonitis (e.g. DeQuervain's Tendonitis), select soft tissue injuries – including mild to moderate sprains and strains and Gamekeeper's Thumb –, as well as for post-cast healing. The lightweight, breathable material and contour fit make this comfortable product an excellent choice.



INDICATIONS FOR USE

- Mild to moderate sprains and strains
- Tendonitis
 - e.g., DeQuervain's Tendonitis
- Post-cast healing
- Other selected soft tissue injuries
 - e.g., Gamekeeper's Thumb

FEATURES AND BENEFITS

- Breathable material
- Contour fit
- Contact Closure Straps
- Customizable Stays

REQUIRED MEASUREMENTS

- Wrist circumference

ORDERING INFORMATION

Size	Wrist Circumference	Left	Right
XSmall	5 – 6" (13 – 16 cm)	3020	3120
Small	6 – 7" (16 – 18.5 cm)	3030	3130
Medium	7 – 8" (18.5 – 20.5 cm)	3050	3150
Large	8 – 9" (20.5 – 23.5 cm)	3070	3170
XLarge	9 – 10" (23.5 – 25.5 cm)	3080	3180

ACCESSORIES

GEL PAD FOR HOT/COLD THERAPY

Description	Left	Right
Formfit Wrist (8" version)*	GB20L	GB20R
Formfit Wrist & Forearm (10" version)	GB22L	GB22R



* Fits XSmall/Small. For Medium-XLarge, please use Form Forearm 10" part numbers



CTi® CUSTOM

Introduced in 1983, CTi remains the cornerstone of our ligament bracing product line today. While the original CTi has evolved over time, our basic philosophy remains unchanged – a static support system consisting of a rigid frame will hold the bones in proper alignment and provide high level of control to prevent displacement. The constant development and improvement of this classic design is why the CTi remains the top choice of athletes and leading physicians around the world.

The rigid, carbon composite CTi knee brace frame captures the tibia, providing the brace-to-bone contact needed for maximum stabilization of the knee joint. The non-elastic cruciate strapping combined with a rigid frame that truly captures the tibia, results in a static support system.

The CTi Custom is generally used for high levels of support where comfort and strength are not compromised with weight and bulkiness. It can also offer greater advantages for accurate fitting where leg shape abnormalities present a problem.



INDICATIONS FOR USE

- For knee conditions that may benefit from increased AP and ML stability around the knee, such as: ACL, MCL, LCL, PCL, rotary and combined instabilities

FEATURES AND BENEFITS

- Anatomically-correct Accutrac® hinges with extension stops
- Proprietary Sensil® silicone liners designed to reduce migration
- Total Support System™ for ACL, MCL, LCL, PCL, rotary and combined instabilities
- Pre-preg carbon fiber, rigid frame construction
- Non-corrosive materials, ideal for water sports
- Custom paint option available
- Standard model for moderate to high impact levels
- Pro Sport model for the highest impact levels
- Vapor model for low to moderate impact levels
- Available in 12 colors

REQUIRED MEASUREMENTS

- Custom-made to measure

CUSTOM STANDARD COLORS



CUSTOM PAINTED DESIGNS



No charge for custom standard colors. Additional fees required for other custom colors, custom painted designs and custom printed graphics.

CTI® CUSTOM

ORDERING INFORMATION

CTI CUSTOM

Description	Left	Right
Standard	B-116600010	B-116500010
Pro Sport	B-117600010	B-117500010
Vapor	B-118600010	B-118500010



SMARTMEASURE®

A digital measuring system for custom knee braces on the iPhone or iPad. The most intuitive, efficient and accurate way to measure for any Össur custom knee brace. Utilizes a section-based, step-by-step approach to guide you through the entire brace selection, measuring and order process.

Description	Part#
SmartMeasure Measuring Kit	CMS0000
Constant Force Caliper	B-312000000

Scans, CMS (CTI only), CCS and casting also accepted. Knee M/L required

ACCESSORIES

CALF LINERS

Description	Part#
CTi Custom liner	B-411500115

STRAPS KITS

Size	Part#
Small, Medium, Large	B-701130104
X-Large, XX-Large, XXX-Large, XXXX-Large	B-701130108

PCL KITS

Size	Part#
Small, Medium	B-705000132
Large, X-Large	B-705000235

CTI® CUSTOM

ACCESSORIES

STRAP PADS*

Size	Part#
Small	B-304010057
Medium, Large	B-304010058
X-Large, XX-Large	B-304010059

*Must also order hook-and-loop B-309020017

AMS (ANTI-MIGRATION SYSTEM) WRAPS

Description	Part#
AMS Wrap EVA	22095
AMS Wrap Neoprene SM-LG (up to 17" in circumference at 3" below knee)	22094
AMS Wrap Neoprene XL (above 17" in circumference at 3" below knee)	22152

MX GEAR

Description	Part#
Patella Cup	B-711130011
Gear Guards	B-705000003
MX Kit S (patella cup, gear guards, undersleeve, stickers)	B-711140002
MX Kit M (patella cup, gear guards, undersleeve, stickers)	B-711140003
MX Kit L (patella cup, gear guards, undersleeve, stickers)	B-711140004
MX Kit XL (patella cup, gear guards, undersleeve, stickers)	B-711140005

SLEEVES

Size	Circumference 15 cm above mid patella	Softsleeve	Neoprene Undersleeve	Neoprene Oversleeve	Sportsleeve	Padded Sports Oversleeve
Small	<15" (38 cm)	20643	20251	20051	20682	20448
Medium	15 – 18" (38 – 45 cm)	20644	20252	20052	20683	20448
Large	18 – 19.5" (45 – 49.5 cm)	20644	20253	20053	20684	20449
X-Large	19.5 – 21.5" (49.5 – 54.5 cm)	20645	20254	20054	20685	20449
XX-Large	21.5 – 24.5" (54.5 – 62 cm)	20645	20255	20055	N/A	
XXX-Large	24.5 – 28" (62 – 71 cm)	20646	20256	20056	N/A	
XXXX-Large	28 – 34" (71 – 86 cm)	20647	20257	20057	N/A	

OTHER ACCESSORIES

Description	Part#
CTi D-Ring Kit Standard 2x 1" and 2x 1.5" D-rings	B-704132600
CTi D-Ring Kit 2" 2x 2" D-rings	B-704132602
CTi Condyle Pad Kit	B-704130150
Add ACL Repair kit	B-705130041
Extension Stop Kit	22130
Flexion Stop Kit (Factory Installed)	19254
Extension strap Kit (Factory Installed)	21144

CTi® 3

CTi®3 is a comfortable, lightweight and durable ligament knee brace, which provides stabilization of the knee joint and an anatomical design suitable for both everyday activities and sports.



INDICATIONS FOR USE

- For knee conditions that may benefit from increased AP and ML stability and protection, such as injuries to the ACL, MCL, LCL, PCL, rotary and combined instabilities.

FEATURES AND BENEFITS

- Enhanced construction - Lightweight, high strength carbon composite frames provide the optimal stiffness to weight ratio.
- Anatomical fit - Designed to fit a wider range of leg shapes and includes an Accutrak® hinge to closely follow the knee's anatomical movement.
- Elevated comfort - Unique liners enhance comfort with their special tread block pattern, which provides a balance of cushion and ventilation
- Easy-to-use accessories and replacement parts, including MX kits, replacement strap sets, liner sets, and flexion stops
- Available in 4 sizes, right and left.

REQUIRED MEASUREMENTS

- M/L Caliper: Medio-laterally at joint width in a standard, weight-bearing position
- Thigh Circumference: Secondary measurement for patients in between sizes, measure 20 cm (8") above mid patella.



CTI® 3

ORDERING INFORMATION

CTI3 - Includes Condyle Pad Set and Extension Stop Set, 0° Extension Stop and Standard Condyle Pad are pre-installed.

Size	M/L Caliper		Thigh Circumference		Right	Left
S	8-10 cm	3.5-4 in	40-47 cm	15.7-18.5 in	CTI-22002	CTI-23002
M	10-11 cm	4-4.5 in	45-55 cm	18.5-21.6 in	CTI-22003	CTI-23003
L	11-13 cm	4.5-5 in	52-61 cm	21.6-24 in	CTI-22004	CTI-23004
XL	13-14 cm	5-5.5 in	58-67 cm	24-26.4 in	CTI-22005	CTI-23005

Note: M/L measurements are the preferred and most accurate measurement for CTi.
Thigh circumference measurement should be used when M/L measurements are between sizes.

ACCESSORIES & REPLACEMENT PARTS

CTI3 MX KIT - Includes Impact Guard, Sleeve with Mesh, CTi Decal Sheet, and CTi Product Bag.

Size	Right	Left
S	CTI-22132	CTI-23132
M	CTI-22133	CTI-23133
L	CTI-22134	CTI-23134
XL	CTI-22135	CTI-23135

LINER SET

Size	Right	Left
S	CTI-22322	CTI-23322
M	CTI-22323	CTI-23323
L	CTI-22324	CTI-23324
XL	CTI-22325	CTI-23325

HOOK SET

Size	Right	Left
S	CTI-22332	CTI-23332
M	CTI-22333	CTI-23333
L	CTI-22334	CTI-23334
XL	CTI-22335	CTI-23335

STRAP SET

Size	Part #
S	CTI-24222
M	CTI-24223
L	CTI-24224
XL	CTI-24225

MISCELLANEOUS

Description	Part #
Guard Elastic Cord	CTI-24130
Guard Screws	CTI-24140
Tibial Wedge Pad	22077
Condyle Pad Set (Thin, Standard, Thick)	CTI-24320
Extension Stop Set (0°, 5°, 10°, 20°, 30°)	CTI-24430
Flexion Stop Set (0°, 60°, 75°, 90°)	CTI-24440
Hinge Sticker Set	CTI-24450
D-Ring Set	CTI-24510

SLEEVE WITH MESH

Size	Part #
S	SLV60012
M	SLV60013
L	SLV60014
XL	SLV60015

REBOUND® POST OP KNEE

The simple, versatile post-operative knee bracing solution that is easy for everyone. Whether adjusting ROM, setting the drop lock, or altering the brace length, you'll appreciate the simplicity of the Rebound Post-op knee brace.

INDICATIONS FOR USE

- ACL, PCL, MCL, LCL repairs/injuries
- Meniscal repairs
- Tibial plateau fractures
- Patellar tendon repairs
- Osteochondral repairs
- Condylar fractures
- Sprains/strains of the knee
- HTOs (High Tibial Osteotomy)

FEATURES AND BENEFITS

- Tool-free design and multi-purpose Smart-Fit™ packaging
- Available in universal, left or right contour and pediatric
- Telescoping frame from 18.5"-27" (Adult) and 15"-21" (Pediatric)
- OneTouch™ easy to adjust ROM hinge with lock-out capability
- Color-coding and numbered frame for patient education
- Quick-fit, gripping buckles for easy application

REQUIRED MEASUREMENTS

Circumference: 6" (15 cm) above mid-patella

ORDERING INFORMATION

REBOUND POST-OP KNEE

Description	Thigh circumference	Cool	Full Foam
Pediatric	12 – 25" (30.5 cm – 63.5 cm)	B-8381470	
Universal, Left contoured	16 – 32" (41 cm – 81 cm)	B-8381680	B-8382680
Universal, Right contoured	16 – 32" (41 cm – 81 cm)	B-8381580	B-8382580
Universal	16 – 32" (41 cm – 81 cm)	B-8381480	B-8382480
Universal, no box	16 – 32" (41 cm – 81 cm)	B-8385480	
Universal XL	16 – 38" (41 cm – 96.5 cm)	B-8381490	B-8382490

ACCESSORIES

Description	Part #
ROM stop locks	B-8380005
Alligator hook and loop kit	B-8380006
Adhesive hook and loop kit pediatric	B-8380008
Adhesive hook and loop kit universal / universal XL	B-8380007
Anti-migration Strap kit pediatric	B-8381093
Anti-migration Strap kit Universal*	B-8381094
Anti-migration Strap kit XL	B-8381095
Standard buckle & pad kit	B-8381096
Incision pad kit 10pk	B-7031805

REPLACEMENT SOFTGOODS

Description	Cool	Full Foam
Pediatric	B-8381072	
Universal (*For universal, left contoured, right contoured)	B-8381082	B-8382082
Universal XL	B-8381092	B-8382092



FORMFIT® POST-OP KNEE

Formfit Post-Op Knee provides range of motion control and immobilization following injury or surgery. Length adjustment is tool free and easy. The low profile ROM hinge can be adjusted with a simple pull, rotate and release motion. Wide range of flexion and extension settings allow you to choose the optimal range of motion.

INDICATIONS FOR USE

- Post-op/post-injury ROM control or immobilization. Indicated for ligament and fracture-related surgeries and when controlled range of motion is necessary

FEATURES AND BENEFITS

- Breakaway struts for easy, tool free length adjustment
- OneTouch™ easy to adjust ROM hinge with lock-out capability from -10° to 30° (10° incremental)
- Extension control from -10° to 90° (10° incremental)
- Flexion control from 0° to 120° (10° incremental)
- Available in 3 models, 3 lengths, and cool or full foam



REQUIRED MEASUREMENTS

- Thigh circumference 15 cm (6") above mid patella

ORDERING INFORMATION

Size	Thigh circumference	Cool	Full Foam
Knee PO 24in DL	UP TO 27" (69cm)	FPOK403100	FPOK403200
Knee PO XL 24in DL	27" – 35" (69-89cm)	FPOK403102	FPOK403202
Knee PO 28in DL	UP TO 27" (69cm)	FPOK403101	FPOK403201
Knee PO XL 28in DL	27" – 35" (69-89cm)	FPOK403103	FPOK403203
Knee PO 16in DL	UP TO 27" (69cm)	-	FPOK403300
Knee PO XL 16in DL	27" – 35" (69-89cm)	-	FPOK403301

SOFT GOODS

Description	Cool	Full Foam
Replacement Softgood, Regular	403175	403275
Replacement Softgood, XL	403176	403277
Replacement Softgood, Regular Long	403276	403278

REPLACEMENT SOFTGOODS

Size	
ROM stop locks (set of 20 lock clips)	B-8380005
Strap Reduction Kit Cool	403199
Strap Reduction Kit Full Foam	403299

REBOUND® KNEE IMMOBILIZER UNIVERSAL

Rebound® Knee Immobilizer Universal features a universal 3-panel design that can be adjusted to accommodate most leg circumferences. With an MR* Conditional rating, patients can be safely scanned in an MR system, while maintaining immobilization.

*See IFU for details.

INDICATIONS FOR USE

- Emergency immobilization
- Pre and post-surgical knee immobilization
- Traumatic knee injuries

FEATURES AND BENEFITS

- Adjustable medial/lateral stays and rigid posterior stays provide motion restriction of the knee
- Universal 3-piece design simplifies inventory needs
- MR* Conditional: safely scan patients in an MR system while maintaining immobilization
- Min thigh circumference: 10.25" (26 cms)
- Max thigh circumference: 26.5" (67.31 cms)



ORDERING INFORMATION

Length	Part#
12" (30 cm)	210012
14" (35 cm)	210014
16" (40 cm)	210016
18" (45 cm)	210018
20" (50 cm)	210020
22" (55 cm)	210022
24" (60 cm)	210024

ACCESSORIES

Description	Part#
Hot/Cold Therapy Gel Pad	GB7



FOOT AND ANKLE



REBOUND® AIR WALKER

The Rebound Air Walker features a host of details designed to provide added protection, superior compression, simplified application and usage, improved comfort and, ultimately, successful patient outcomes.



INDICATIONS FOR USE

REBOUND AIR WALKER

Foot and ankle conditions that may benefit from motion restriction, such as:

- Grade 2 and 3 ankle sprains
- Stable fractures
- Tendon or ligamentous sprain
- During postoperative or rehab phase. If used with the Achilles Wedge Kit, Achilles ruptures can be treated as well.

REBOUND AIR WALKER LOW TOP

Foot and ankle conditions that may benefit from motion restriction, such as:

- Stable foot fractures
- Tendon or ligamentous sprain
- During postoperative or rehab phase.

FEATURES AND BENEFITS

- Full circumferential shell with additional semi-soft toe bumper for frontal toe protection
- Soft Flex Edge™ reduces pressure points
- Full rocker bottom is especially engineered to be low and wide to help promote a natural gait
- Stretch-to-fit shell for optimal fit
- Shell can be trimmed for additional stretch in the calf
- Cushioning and breathable softgood provides comfort
- Linked medial/lateral bladders for easy inflation and equal compression
- Integrated pump and air release valve for easy access

REQUIRED MEASUREMENTS

- Shoe size



REBOUND® AIR WALKER

ORDERING INFORMATION

REBOUND AIR WALKER

Size	Men's Shoe Size US	Women's Shoe Size US	Standard	Low Top
X-Small	2 – 4	3.5 – 5.5	B-242900001E	B-242900061E
Small	4 – 7	5.5 – 8.5	B-242900002E	B-242900062E
Medium	7 – 10.5	8.5 – 12	B-242900003E	B-242900063E
Large	10.5 – 12.5	12 – 14	B-242900004E	B-242900064E
X-Large	12.5 – 15	14 – 16.5	B-242900005E	B-242900065E

ACCESSORIES

REPLACEMENT SOFTGOODS

Size	Slim Liner / High Top	Slim Liner / Low Top
X-Small	B-418030101	B-418030161
Small	B-418030102	B-418030162
Medium	B-418030103	B-418030163
Large	B-418030104	B-418030164
X-Large	B-418030105	B-418030165

REBOUND ACHILLES WEDGE KIT

Size	Part#
Small	AWK0001
Medium	AWK0005
Large	AWK0009
Universal*	AWK00015

* Only fits sizes M to XL

WALKER COVERS

Size	Hygiene covers (2 pcs)	Durable weather cover	Disposable weather cover (20 pcs)
Small	B-418500602	B-418500502	B-418500512
Medium	B-418500603	B-418500503	
Large	B-418500604	B-418500504	B-418500514
X-Large	B-418500605	B-418500505	

OTHER ACCESSORIES

Description	Part#
Strap Extension	B-502100101
Rebound Hightop Socks SM/MD	B-418500703
Rebound Hightop Sock LG/XL	B-418500704

ROM WALKER

INDICATIONS FOR USE

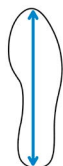
- Foot and ankle conditions that may benefit from motion restriction or controlled range of motion, such as:
- Grade 2 and 3 ankle sprains
- Stable fractures
- Achilles ruptures
- During postoperative or rehab phase

FEATURES AND BENEFITS

- Lightweight and low profile aluminum side struts
- Rocker bottom design assists gait
- Decreased heel-strike force on calcaneus
- Simple to apply and adjust by circumferential straps
- Dial lock hinges with adjustable ROM limitation
- ROM control from 0-45° of dorsi/plantar flexion (7.5° interval)
- Available in Standard and Air version



ORDERING INFORMATION



Shoe size.

Size	Shoe size				Standard
	Men's Shoe Size US	Women's Shoe Size US	Shoe Size UK	Shoe Size EU	Part#
XS	4.5	up to 4	up to 3.5	up to 35.5	RY-WK002-XS
S	5 - 8.5	4.5 - 7	4 - 6.5	36 - 39	RY-WK002-SM
M	9 - 11	7.5 - 10	7 - 9.5	40 - 44	RY-WK002-MD
L	11.5 - 13.5	10.5 - 12.5	10 - 12	44 - 46.5	RY-WK002-LG
XL	13.5 +	12.5 +	12 +	46.5 +	RY-WK002-XL

FORMFIT® ANKLE BRACE

The Formfit® Ankle brace provides stability and protection for the ankle – whether used prophylactically, for chronic instability or following an injury. A hybrid between a rigid ankle stirrup and a soft ankle support, the Formfit Ankle ensures a close fit which limits inversion, eversion, flexion and extension movements. The low profile design fits easily into shoes and the quick lace up feature makes it easy to don and doff. Breathable material ensures it can be comfortably worn all day.



INDICATIONS FOR USE

- Grade I-II sprains and strains
- Chronic instability
- Prophylactic use



FEATURES AND BENEFITS

- Breathable material
- Quick lace Up
- Inversion/Eversion Control
- Available with Figure 8 strap

REQUIRED MEASUREMENTS

- Measure ankle circumference diagonally over the base of the heel and across the ankle bone.

ORDERING INFORMATION

Size	Ankle Circ.*	Formfit Ankle Brace
X-Small	11 – 12" (28 – 30.5 cm)	B-212010001
Small	12 – 13" (30.5 – 33 cm)	B-212010002
Medium	13 – 14" (33 – 35.5 cm)	B-212010003
Large	14 – 15" (35.5 – 38 cm)	B-212010004
X-Large	15 – 16" (38 – 40.5 cm)	B-212010005

AFO DYNAMIC

The AFO Dynamic provides a strong, lightweight solution for patients with varying degrees of drop foot secondary to a variety of neurological conditions. Össur has taken the carbon fiber technology from its Flex-Foot® product and incorporated it into the new AFO Dynamic to provide increased support over traditional ankle foot orthoses. The energy storing properties of carbon fiber make it an ideal material for this dynamic ankle foot orthosis because it provides real energy return. Best for those people leading busy lives, the AFO Dynamic will ensure a more efficient walk for the user.



INDICATIONS FOR USE

Drop foot secondary to:

- Cerebro Vascular Accident (CVA)
- Mild knee instability
- Other neurological conditions
- Charcot Marie Tooth disease (HMSN)
- Multiple Sclerosis

Contraindications:

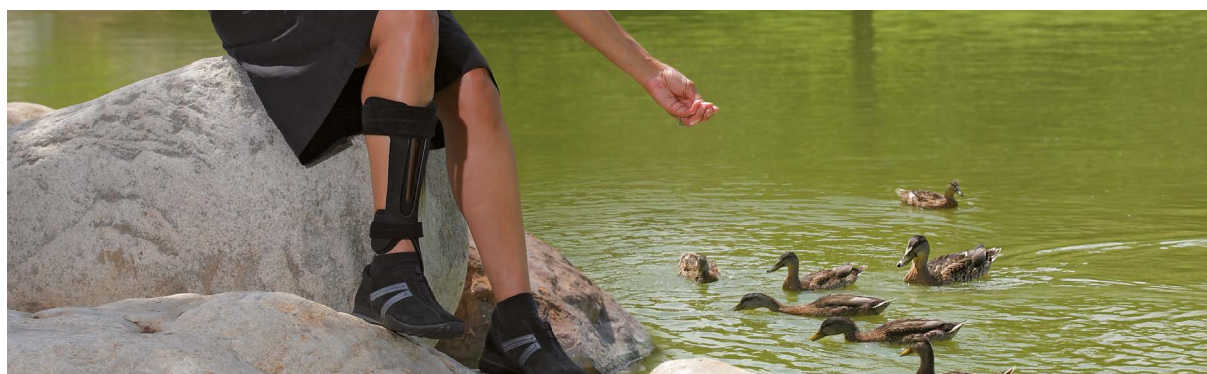
- Severe ankle – foot deformities
- Fluctuating edema
- Severe spasticity

FEATURES AND BENEFITS

- Carbon fiber design provides excellent strength-to-weight ratio and dynamic motion
- The tapered carbon heel stores energy and manages forces at heel strike
- Full-length toe lever provides full support while foot is loaded, as well as reduced shock to the contralateral limb
- Creates medial-lateral stability at mid-stance
- Reduces energy consumption by reducing hip hike
- Medial strut makes it less visible in shoe
- Open anterior tibia shell provides superior anatomical fit, and reduces heat and perspiration
- Weight limit: 120kg (265lbs)

REQUIRED MEASUREMENTS

- Shoe size
- Calf height at thickest part of the calf



AFO DYNAMIC

ORDERING INFORMATION

AFO DYNAMIC

		Shoe Size US		Shoe Size UK		Shoe Size EU cm			
Size	Calf Height	Male	Female	Male	Female	Male	Female	Left	Right
X-Small	30 – 34 cm	3 – 5	4 – 6.5	2.5 – 4.5	< 4	34 – 37	< 37	O-102021	O-102011
Small	32 – 36 cm	5.5 – 7.5	7 – 9	5 – 7	4.5 – 6.5	37.5 – 40	37.5 – 40	O-102022	O-102012
Medium	34 – 38 cm	8 – 10.5	9.5 – 12	7.5 – 10	7 – 9.5	40.5 – 44.5	40.5 – 44	O-102024	O-102014
Large	36 – 40 cm	11 – 14		10.5 – 13.5		45 – 48.5		O-102026	O-102016

ACCESSORIES

ACCESSORY KITS

Size	Part#
X-Small	O-102101
Small	O-102102
Medium	O-102104
Large	O-102106

Note: Accessory kits come with foam padding, upper and lower Velcro straps, and Velcro dots.

AFO LIGHT

AFO Light provides support only where it is needed, eliminating unnecessary bulk and providing a cosmetically-appealing look. Using the best of Flex-Foot® technology and the energy storing properties of carbon fiber, AFO Light offers a strong and lightweight solution for people with mild to moderate Drop Foot.



INDICATIONS FOR USE

- Mild to moderate drop foot
- Contraindications:
 - Severe ankle – foot deformities
 - Medial-lateral instability
 - Severe spasticity
 - Extreme activity
 - Fluctuating edema

FEATURES AND BENEFITS

- Energy return and propulsion assistance of the limb at toe off
- Supports the foot for ground clearance during swing phase
- Carbon fiber design provides excellent strength-to-weight ratio and dynamic motion
- Gradual plantar flexion at initial contact
- Stiffness gradient at heel and the toe correspond to ground reaction forces as they are applied to the foot
- Easy to don and doff
- Weight limit: 100kg (220lbs)

REQUIRED MEASUREMENTS

- Shoe size
- Calf height at thickest part of the calf

ORDERING INFORMATION

AFO LIGHT

		Shoe Size US		Shoe Size UK		Shoe Size EU			
Size	Calf height	Male	Female	Male	Female	Male	Female	Left	Right
Small	32 – 36 cm	Up to 7.5	7 – 9	< 7	4.5 – 6.5	< 40	37.5 – 40	O-121022	O-121012
Medium	34 – 38 cm	8 – 10.5	9.5 – 12	7.5 – 10	7 – 9.5	40.5 – 44.5	40.5 – 44	O-121024	O-121014
Large	36 – 40 cm	11 – 14		10.5 – 13.5		45 – 48.5		O-121026	O-121016
X-Large	38 – 42 cm	12 – 15		11.5 – 14.5		46 – 50		O-121028	O-121018

ACCESSORIES

Description	Part#
Replacement Kit	O-122101

FOOT-UP®

Foot-Up is a lightweight ankle orthosis that offers dynamic support for Drop Foot or similar complaints. The revolutionary orthosis provides visible improvement in gait by supporting the foot the moment it is raised.



INDICATIONS FOR USE

- Drop foot
- Support of dorsiflexion

FEATURES AND BENEFITS

- Streamlined
- Lightweight
- Invisible when worn
- Comfortable to wear
- Breathable material
- Padded
- Easy to fit
- Separate inlays available
- Available in black and beige

REQUIRED MEASUREMENTS

- Basic version: Circumference of ankle, measured around the malleoli
- Shoeless version: Circumference of foot immediately behind the ball of the foot

ORDERING INFORMATION

FOOT-UP

Size	Ankle Circumference	Beige	Black
Medium	7 – 8.5" (18 - 21 cm)	07811 -1	07810-1
Large	8.5 – 10" (22 - 26 cm)	07811 -2	07810-2
X-Large	10 – 13" (27 - 33 cm)	07811 -3	07810-3

SHOELESS VERSION*

Size	Foot Circumference	Beige	Black
Small	< 8" (20 cm)	27811-1	27810-1
Medium	8 – 9.5" (20 - 24 cm)	27811-2	27810-2
Large	9.5 – 11" (24 - 28 cm)	27811-3	27810-3
X-Large	> 11" (28 cm)	27811-4	27810-4

*Shoeless version item comprises of foot wrap only and must be ordered with the Foot-Up unless the patient already has one.

ACCESSORIES

Description	Beige	Black
Foot-Up plastic insert	17811	17810

FORMFIT® ANKLE STIRRUPS

Formfit Ankle Stirrups are lightweight and sturdy. Whether worn to accommodate an acute injury, chronic instability, or post cast healing, Formfit Ankle Stirrups stabilize injured ankles by restricting the inversion/eversion motion. The universal design has been carefully engineered to accommodate the malleoli on both sides and ensures a great, comfortable fit. The slip resistant heel strap can be adjusted to accommodate most ankles. Our signature Flex-Edge™ overmold surrounds the stirrup's outer shell protecting patient's skin from any hard edges, further adding to a comfortable fit. The universal stirrup design is available with three different liner options: inflatable air, gel, or foam, offering each patient a solution that best fits their needs.



INDICATIONS FOR USE

Situations requiring inversion/eversion restriction.

These may include:

- Mild to severe ankle sprains
- Chronic ankle instability
- Post-cast and post walker support
- Ankle injury rehabilitation and/or post-surgical use

FEATURES AND BENEFITS

- Universal shell, carefully crafted to fit both right and left ankles
- Soft Flex-Edge overmold for increased comfort
- Adjustable heel strap to optimize patient fit and comfort
- Slip-resistant silicone dots to reduce slipping and stabilize the foot inside of shoe
- 2 bidirectional hook and loop straps ensure a secure and stable fit
- Choice of inflatable, foam, and gel liners to suit your needs
- Available in Adult and Youth sizes

REQUIRED MEASUREMENTS

- Patient's height

ORDERING INFORMATION



Size	Patient's Height	Formfit Air Ankle Stirrup	Formfit Gel Ankle Stirrup	Formfit Foam Ankle Stirrup
Adult	Above 5'3" (160 cm)	70350	70351	70352
Youth	Below 5'3" (160 cm)	71350	71351	71352



TEL +800 3539 3668
orders.greece@ossur.com

