

# Össur Leg:

## K-4 AK Order Form

### Step 1 General Information

Prosthetist Name: \_\_\_\_\_ Acc Nr: \_\_\_\_\_  
 Patient Identifier: \_\_\_\_\_ Weight: \_\_\_\_\_ kg Date of Birth: \_\_\_\_ / \_\_\_\_ / \_\_\_\_\_

### Step 2 Select Suspension System



Seal-In®	Seal-In® Locking TF	Suspension Components	
<b>ICEROSS SEAL-IN® X TF</b> Standard Conical Size: _____ Ring size: _____ Classic Volume Grip	<b>ICEROSS SEAL-IN® X LOCKING TF</b> Standard Conical Size: _____ Ring size: _____ Classic Volume Grip	ICELOCK® CLUTCH 211 L-211000 OR ICELOCK® CLUTCH 4H 214 L-214000 OR *ICELOCK® 621 RATCHET L-621000 OR ICELOCK® LANYARD 631 L-631000 OR ICELOCK® SMOOTH 651 L-651000 OR *ICELOCK® EXPULSION VALVE 552 L-551002 OR UNITY TF VALVE KIT UTF0001 OR ICELOCK 544 DIRECT SOCKET ADAPTER PLATE** L-544050 OR ICELOCK 544 PLATE EXPULSION** L-544521 OR ICELOCK 544 PLATE UNITY** L-544511 OR ICELOCK 850 HYBRID FOR DIRECT SOCKET L-850001 OR ICELOCK 850 HYBRID FOR 4-HOLE LAMINATION L-850002 OR ICELOCK 850 HYBRID FOR LAMINATED SOCKETS L-850003	
<b>ICEROSS SEAL-IN® X5 TF</b> Standard Conical Size: _____	<b>*ICEROSS® TF LOCKING LINER</b> Standard Conical Size: _____		
<b>*ICEROSS® TF SEAL-IN®</b> Standard Conical Size: _____			
<b>4 SEAL CLASSIC™</b> Standard Conical Size: _____			

### Step 3 Select Socket - Direct Socket TF



#### Braid Selection

Liner Size	Braid Size
23.5 - 28	5"
30 - 32	5" OR 7" with Standard Distal Connector
34 - 40	7"*
45 - 55	9"

\* Consider 7 inch braids with large distal connector during assessment of residual limb size, length and amount of soft tissue.

#### ICEROSS® CASTING LINER TF

Standard Conical

Size: \_\_\_\_\_

#### Direct Socket Material Kit Selection

5"	Glass Fibers with medium distal connector, Neutral Resin	M-501105
7"	Glass Fibers with medium distal connector, Neutral Resin	M-5001 07
7"	Glass Fibers with large distal connector, Neutral Resin	M-501107
9"	Glass Fibers with large distal connector, Neutral Resin	M-501109
5"	Glass Fibers with medium distal connector, Black Resin	M-501115
7"	Glass Fibers with medium distal connector, Black Resin	M-500117
7"	Glass Fibers with large distal connector, Black Resin	M-501117
9"	Glass Fibers with large distal connector, Black Resin	M-501119
5"	Basalt Fibers with medium distal connector, Black Resin	M-501315
7"	Basalt Fibers with medium distal connector, Black Resin	M-500317
7"	Basalt Fibers with large distal connector, Black Resin	M-501317
9"	Basalt Fibers with large distal connector, Black Resin	M-501319

#### Össur Brim TF Size Selection

Size	Circumference	Model
36	35 - 37 cm	M-FBS360
38	37 - 39 cm	M-FBS380
40	39 - 41 cm	M-FBS400
42	41 - 43 cm	M-FBS420
44	43 - 45 cm	M-FBS440
46	45 - 47.5 cm	M-FBS460
48.5	47.5 - 50 cm	M-FBS485
51	50 - 52.5 cm	M-FBS510
53.5	52.5 - 55 cm	M-FBS535
56	55 - 57.5 cm	M-FBS560
58.5	57.5 - 60 cm	M-FBS585
61	60 - 63 cm	M-FBS610
64	63 - 66 cm	M-FBS640
67	66 - 69 cm	M-FBS670
70	69 - 72 cm	M-FBS700

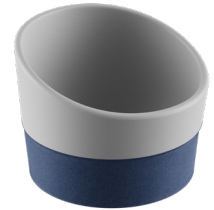
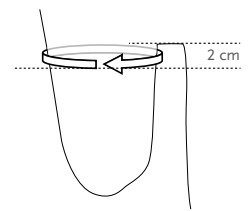


Fig. 1



#### BRIM SIZE SELECTION

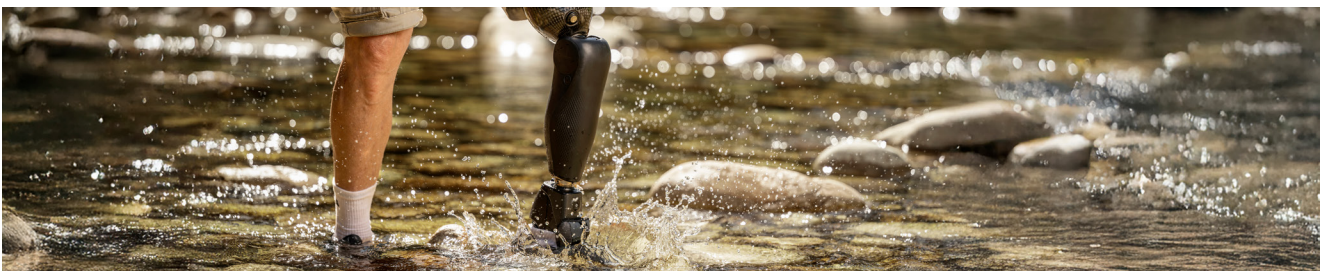
1. Measure the circumference 1-2 cm below the level of ischial tuberosity (see fig.1)
2. Select the correct brim size from the table above.

**Note.** If the circumference is between two sizes, select the larger size. If the brim will be placed high on the lateral side, think of selecting one size larger.

#### Socket Components Selection

600 MODULAR SPACER FOR ICELOCK 600 SERIES	L-661000
BOTTOM SEAL FOR DIRECT SOCKET	M-400206

### Step 4 Select Knee



**TOTAL KNEE® 2100**  
 \*MAUCH® KNEE PLUS  
 \*ASPIRE™ H1 KNEE

**PASO KNEE**  
 WITH MALE PYRAMID  
 WITH LOOP ADAPTER AND  
 FEMALE PYLON  
 WITH IKF ADAPTER

**RHEO KNEE®**  
 NAVII® KNEE

**OTHER**  
 NAME: \_\_\_\_\_

## Step 5 Select Foot + Cover



\*VARI-FLEX®

\*\*▲VARI-FLEX® LP

▲PRO-FLEX® LP TORSION

▲PRO-FLEX® XC

▲PRO-FLEX® XC TORSION

▲PRO-FLEX® TERRA

▲PRO-FLEX® ST

▲FLEX-FOOT CHEETAH® XPLORE

\*FOOT COVER Beige Brown

Foot Size: \_\_\_\_\_

Left/Right: \_\_\_\_\_

Category: \_\_\_\_\_

▲ Please note delivery period 14 working days for this product

## Step 6 Select Adapter Combinations

### SOCKET ADAPTERS

4-HOLE SOCKET ADAPTER AL 100kg	A-122100
4-HOLE SOCKET ADAPTER TI 166kg	A-125100
4-HOLE CONNECTION PLATE AL 136kg	1651014
4-PRONG SOCKET ADAPTER SS 166kg	A-114040
3-PRONG SOCKET ADAPTER SS 166kg	A-114030
MALE PYRAMID SOCKET ADAPTER TI 166kg	A-135100

### PYRAMID ADAPTERS

#### PYRAMID INSERTS

MALE PYRAMID INSERT FOR PRONG TI 166kg	A-135300
FEMALE PYRAMID INSERT FOR PRONG TI 166kg	A-145300
FEMALE PYRAMID INSERT FOR PRONG Low Profile TI 166kg	A-145310
MALE PYRAMID INSERT FOR PRONG SS Insert 100kg	A-134300
FEMALE PYRAMID INSERT FOR PRONG SS 100kg	A-144300

#### 4 HOLE ADAPTERS

4-HOLE MALE PYRAMID AL with SS Insert 100kg	A-233100
4-HOLE FEMALE PYRAMID AL 100kg	A-242100
4-HOLE TUBE CLAMP AL 100kg	A-322100
4-HOLE MALE PYRAMID WITH ROTATION SS 136kg	A-234320
4-HOLE PYRAMID RECEIVER WITH ROTATION SS 136kg	A-244320
4-HOLE MALE PYRAMID TI 166kg	A-235100
4-HOLE MALE PYRAMID WITH ROTATION TI 166kg	A-244320
4-HOLE FEMALE PYRAMID TI 166kg	A-235300
4-HOLE FEMALE PYRAMID WITH ROTATION TI 166kg	A-245100
4-HOLE TUBE CLAMP TI 166kg	A-325100
EURO 4-HOLE ADAPTER AL 125kg	A-122300

### SHIFT ADAPTERS

FEMALE PYRAMID TUBE CLAMP WITH 14MM OFFSET AL 100kg	A-342430
4-HOLE FEMALE PYRAMID WITH 20/20 OFFSET AL 125kg	A-242500
4-HOLE FEMALE PYRAMID 20/20 OFFSET 10° RIGHT AL 125kg	A-242510
4-HOLE FEMALE PYRAMID 20/20 OFFSET 10° LEFT AL 125kg	A-242520
MALE-FEMALE DOUBLE ADAPTER WITH 8MM OFFSET & 10° ANGLE SS 125kg	A-554700
4-HOLE MALE PYRAMID WITH 5/16" / 8MM OFFSET TI 166kg	A-235400
SHIFT ADAPTER WITH TITANIUM TI 166kg	A-645210
FLEXION PLATE 45MM 10°	A-282440
FLEXION PLATE 60MM 10°	A-282460
FLEXION PLATE 75MM 15°	A-282470

### PYLONS AND TUBES

#### 100kg

FEMALE PYLON KIT SHORT A-762111 AL 100kg	A-762111
FEMALE PYLON KIT LONG A-762121 AL 100kg	A-762121
HEIGHT ADJUSTABLE PYLON SHORT 77-95MM AL 100kg	A-542350
HEIGHT ADJUSTABLE PYLON LONG 94-128MM AL 100kg	A-542350

FEMALE PYLON SHORT AL 100kg	
FEMALE DOUBLE ADAPTER 32MM AL 100kg	A-135100
FEMALE DOUBLE ADAPTER 45MM AL 100kg	A-542110
FEMALE DOUBLE ADAPTER 60MM AL 100kg	A-542120
FEMALE DOUBLE ADAPTER 75 MM AL 100kg	A-542140

MALE DOUBLE ADAPTER AL with SS Pyramid Insert 100kg	A-533100
---	----------

MALE PYRAMID TUBE CLAMP AL 100kg	A-333100
FEMALE PYRAMID TUBE CLAMP AL 100kg	A-342100

MALE SINGLE ADAPTER - SHORT AL 100kg	A-433110
MALE SINGLE ADAPTER - LONGAL 100kg	A-433120*
FEMALE SINGLE ADAPTER - SHORT AL 100kg	A-442100*
FEMALE SINGLE ADAPTER - LONG AL 100kg	A-442110*

#### 166 KG

FEMALE PYLON SHORT TI 166kg	A-748030
FEMALE DOUBLE ADAPTER 32MM TI 166kg	A-545110
FEMALE DOUBLE ADAPTER 45MM TI 166kg	A-545120
FEMALE DOUBLE ADAPTER 60MM TI 166kg	A-545130
FEMALE DOUBLE ADAPTER 75 MM TI 166kg	A-545140

MALE DOUBLE ADAPTER TI 166kg	A-535100
------------------------------	----------

MALE PYRAMID TUBE CLAMP TI 166kg	A-335100
FEMALE PYRAMID TUBE CLAMP TI 166kg	A-345100

MALE SINGLE ADAPTER - SHORT TI 166kg	A-435110
MALE SINGLE ADAPTER - LONG TI 166kg	A-435120
FEMALE SINGLE ADAPTER TI 166kg	A-445100

\* Reimbursed for PMB



WWW.OSSUR.COM/EN-ZA

Össur South Africa  
Unit 1, Stonewood Business Park  
9 Tanzanite Crescent  
Kraaifontein  
Cape Town  
7550

T 0800 996 220  
F 0800 981 744  
E ossursa@ossur.com

