



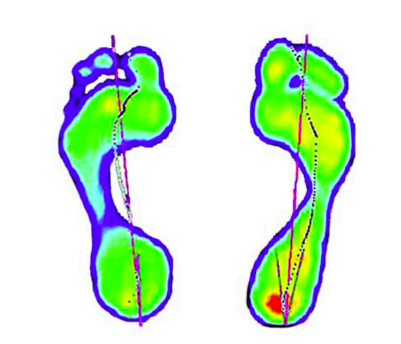
Innovation Rooted in Technology, Inspired by People

Pro-Flex technology has evolved through years of research, patents, and user feedback. From the groundbreaking [Vari-Flex](#) to the latest [Pro-Flex Terra](#), our mission remains the same: to create prosthetic feet that enhance mobility and improve lives. See how our latest advancements in carbon fiber technology and biomechanical engineering are setting new benchmarks in prosthetic foot performance.



[See the Science Behind Pro-Flex](#)

Engineered for Better Outcomes



- **Enhanced Performance:** Pro-Flex feet increase peak ankle power by up to 95% compared to conventional energy-storing and return feet.
- **Reduced Stress:** Pro-Flex feet reduce stress on the sound side by 13%.
- **Designed for Comfort & Mobility:** Every feature is focused on improving mobility and providing long-term comfort.
- **Proven Results:** Backed by research and real-world success, Pro-Flex stands out as a leader in prosthetic foot technology.

Why Pro-Flex? [Learn More](#)

The Pro-Flex DNA



Full Length Asymmetric Footblade + Split Toe

Full effective toe length and design contribute to a more fluid and natural progression from heel strike to toe off than a conventional energy storing and return foot.



Three-Blade Design

All Pro-Flex feet use a proprietary, unique 3-blade design, which enhance range-of-motion and energy return compared to a conventional energy storing and return foot which often only use a 2-blade design.



A Foot for Everyone

Each Pro-Flex carbon fiber prosthetic foot is developed with different users and their unique challenges in mind. Factors like build height, activity level, lifestyle and finances are all important considerations when selecting a foot.

Quality of Life Improvements for Prosthetic Foot Covers

- **User-Centric Development:** New foot cover for [Pro-Flex Terra](#) created through collaboration with users, clinicians, and Paralympian Markus Rehm.
- **Easy Maintenance:** Snap-on foot cover allows for quick removal and cleaning.
- **Enhanced Footwear Flexibility:** SandalFix accessory securely attaches the foot cover to open heel footwear.
- **Now Available:** We are excited to announce that the Pro-Flex Terra kits and replacement FSW foot covers are now available in black.



Discover the Advancements

Customer Care

Contact the Customer Care team today!

Email

Meet the team



Össur ANZ

Sydney: 26 Ross St, North Parramatta, NSW 2151 | 1300 123 268

Melbourne: 9 Market Dr, Bayswater North, VIC 3153 | 1300 123 268

Auckland: 6/80 Westpoint Dr, Hobsonville, Auckland, 0618 | 0800 369 524

Want to change the types of emails you receive from Össur?

Selecting your preferences helps us tailor content to your interests,
ensuring emails are relevant and engaging to you.

[Update your preferences](#)